



Capacity Building in Higher Education (CBHE)

General CBHE Infoday

5 December 2024

EACEA.A.4 - International Capacity Building

*European Education and Culture
Executive Agency*

Infoday Agenda

09:45-10:00

Connections (Brussels time – CET)

10:00-10:10

Introduction

Bodo Richter – Head of Unit EACEA A4

10:10-10:20

Policy context

Adrian Veale - DG EAC C3

Luisa Bunescu - DG INTPA G3

10:20-10:50

CBHE: What is new?

Anastasios Tsirakidis and Andy

Kontoudakis - EACEA A4

10:50-11:00

Questions and answers

11:00-11:10

Coffee break

11:10-11:50

How to prepare a competitive project proposal? Award criteria, tips, and lessons learnt

Petronela Burceag and Adelaide Aglietta – EACEA A4

11:50-12:00

Questions and answers

12:00-12:10

How to request and validate a PIC?

Maria Carneiro - REA validation service

12:30-13:00

General questions and answers



Technical arrangements

- The session is being recorded.
- The presentations and recording will be made available after the session on the event [website](#).
- For the Q&A sessions, please submit your questions in [Slido](#) (#CBHE2025).
- We remain available after the event:
 - EACEA-EPLUS-CBHE@ec.europa.eu

CBH2025 Info session | Questions?

Join at
slido.com
#CBHE2025



CBHE 2025

GENERAL INFORMATION





Capacity Building in Higher Education

- To bring **positive and long-lasting effects** on participating **organisations** and **policy systems**

→ **Part B of the Erasmus+ Programme Guide** & the EU Funding & Tenders Portal (FTOP): <https://erasmus-plus.ec.europa.eu/erasmus-programme-guide>

Purpose & context

- Support the **relevance, quality, modernisation** and **responsiveness** of **Higher Education** institutions and systems
- In line with the **Sustainable Development Goals (SDGs)**, the **Paris Agreement** and **Global Gateway strategy**

Format & Purpose

- **International cooperation projects**
- Focus on the **needs of the third countries** not associated to the Erasmus+ Programme



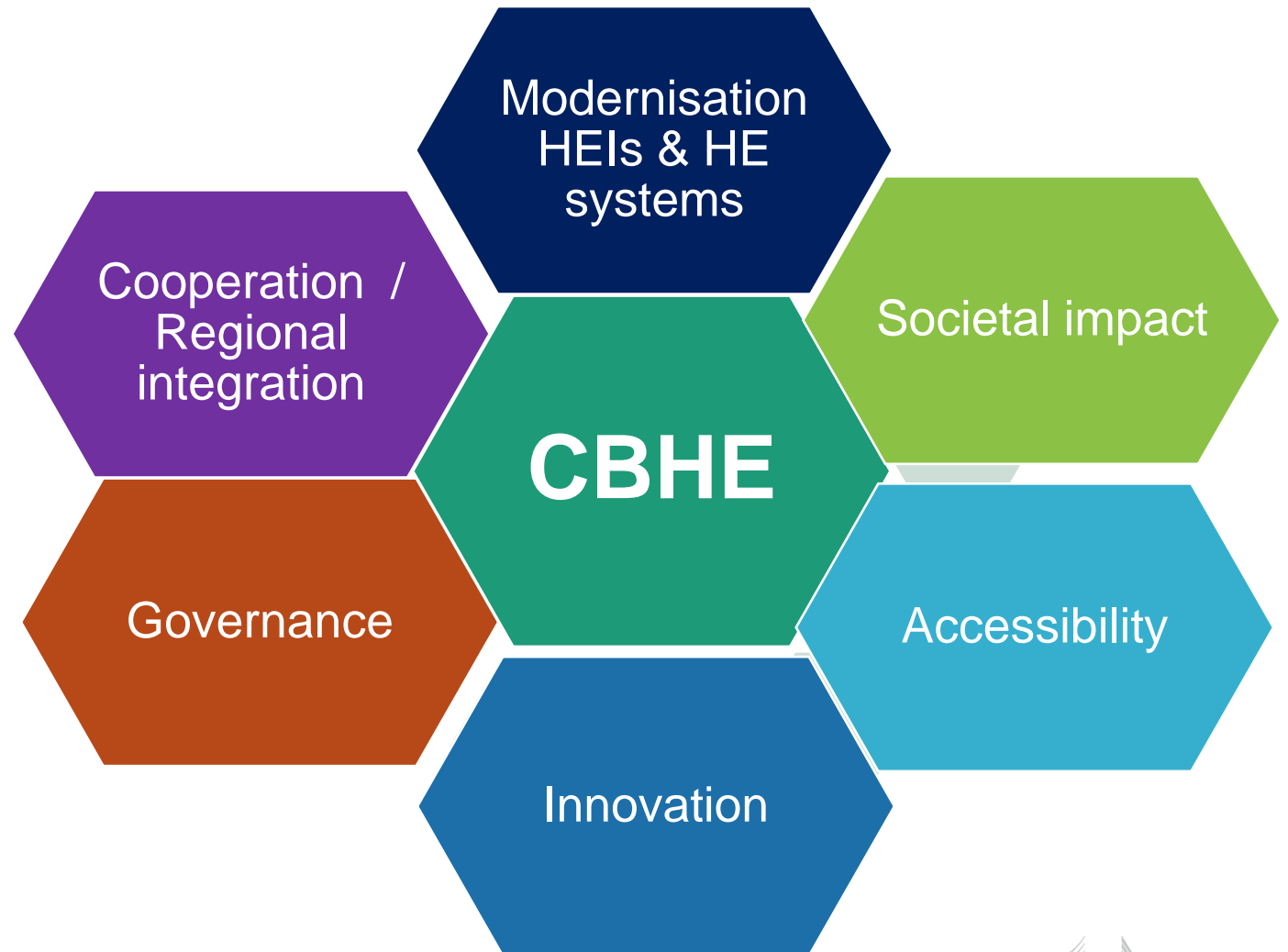
Priorities

- **EU Erasmus+ Programme priorities** for these countries/regions

Multilateral partnerships between **organisations active in the field of higher education**



Objectives



Eligible Regions

Western Balkans (Region 1)	Albania, Bosnia and Herzegovina, Kosovo*, Montenegro
Neighbourhood East (Region 2)	Armenia, Azerbaijan, Georgia, Moldova, Ukraine*
South-Mediterranean countries (Region 3)	Algeria, Egypt, Israel*, Jordan, Lebanon, Libya, Morocco, Palestine*, Syria**, Tunisia
Asia (Region 5a)	Bangladesh , Bhutan , Cambodia , China, DPR Korea, India, Indonesia, Laos , Malaysia, Maldives, Mongolia, Myanmar , Nepal , Pakistan, Philippines, Sri Lanka, Thailand, Vietnam
Central Asia (Region 6)	Afghanistan , Kazakhstan, Kyrgyzstan, Tajikistan, Turkmenistan, Uzbekistan
Middle East (Region 7a)	Iran, Iraq, Yemen
Pacific (Region 8a)	Cook Islands, Fiji, Kiribati , Marshall Islands, Micronesia, Nauru, Niue, Palau, Papua New Guinea, Samoa, Solomon Islands , Timor-Leste , Tonga, Tuvalu , Vanuatu
Sub-Saharan Africa (Region 9)	Angola , Benin , Botswana, Burkina Faso , Burundi , Cameroon, Cabo Verde, Central African Republic , Chad , Comoros , Congo, Congo - Democratic Republic of the , Côte d'Ivoire, Djibouti , Equatorial Guinea, Eritrea , Eswatini, Ethiopia , Gabon, Gambia , Ghana, Guinea , Guinea-Bissau , Kenya, Lesotho , Liberia , Madagascar , Malawi , Mali , Mauritania , Mauritius, Mozambique , Namibia, Niger , Nigeria, Rwanda , Sao Tome and Principe , Senegal , Seychelles, Sierra Leone , Somalia , South Africa, South Sudan , Sudan , Tanzania , Togo , Uganda , Zambia , Zimbabwe
Latin America (Region 10)	Argentina, Bolivia, Brazil, Chile, Colombia, Costa Rica, Ecuador, El Salvador, Guatemala, Honduras, Mexico, Nicaragua, Panama, Paraguay, Peru, Uruguay and Venezuela
Caribbean (Region 11)	Antigua & Barbuda, Bahamas, Barbados, Belize, Cuba, Dominica, Dominican Republic, Grenada, Guyana, Haiti , Jamaica, St Kitts and Nevis, St Lucia, St Vincent & Grenadines, Suriname, Trinidad & Tobago

* As defined in the Programme Guide

** Exception: Participation of Syria as defined in the Programme Guide and in CBHE specifically for Strand 3

2025 CBHE indicative available budget and n° of projects

Regions	Indicative 2025 CBHE budget	Strand 1	Indicative n° of projects	Strand 2	Indicative n° of projects	Strand 3	Indicative n° of projects
Region 1 Western Balkans	10.800.000	3.240.000	8	4.860.000	6	2.700.000	2
Region 2 Neighbourhood East	14.850.000	4.320.000	10	7.830.000	9	2.700.000	2
Region 3 South-Mediterranean countries	9.730.000	3.182.991	7	5.547.009	6	1.000.000	1
Region 5a Asia	19.820.000	2.153.803	5	11.166.197	13	6.500.000	6
Region 6 Central Asia	5.600.000	613.334	1	2.986.666	3	2.000.000	2
Region 7a Middle East	1.000.000	-	-	-	-	1.000.000	1
Region 8a Pacific	1.000.000	-	-	-	-	1.000.000	1
Region 9 Sub-Saharan Africa	24.650.000	5.766.792	14	10.883.208	13	8.000.000	8
Region 10 Latin America	10.250.000	1.625.000	4	5.125.000	6	3.500.000	3
Region 11 Caribbean	1.000.000	-	-	-	-	1.000.000	1
2025 CBHE indicative budget and n° of projects to be funded (national / regional)	98.700.000	20.901.920	49	48.398.080	56	29.400.000	27
2025 CBHE indicative budget and n° of projects to be funded (cross-regional)	8.300.000	≈ 11 proposals					
Indicative 2025 CBHE budget	107.000.000	≈ 143 proposals					

CBHE main features

A. Priorities

- **Overarching & regional context**

B. Three Strands

- **Different types of support**

C. Project types

- **Different configurations**

D. Budget system

- **Lump sum II**

CBHE 2025

A. OVERARCHING PRIORITIES



Overarching priorities



Green Deal

Contribute to a successful green and sustainable global economic recovery (including climate change, environment and energy), awareness-raising, green jobs

Digital transformation

Improving digital skills and competences, connectivity, teacher training, digital education systems

Integration of migrants

Recognition of qualifications, legal pathways, integration of migrants and displaced persons, education access, scholarships, language education

Governance, Peace, Security, and Human development

Human rights, social and economic rights, democracy, fundamental values, governance, citizenship, health, youth, gender, access and inclusion

Sustainable growth & Jobs

Skills, entrepreneurship, employability, links to the labour market and jobs creation, job opportunities, rural areas, private sector involvement

* Please consult the call conditions as defined in the Programme Guide

Overarching priorities – Global Gateway



**Global
Gateway**

Erasmus+
Global Gateway–related
priorities in the respective
countries for Regions 5a-
11 in Strand 3

...but also relevant for all
CBHE strands

** see further ahead...*

Overarching priorities

Green Deal

- Regions 1, 2, 3, 5a, 6, 7a, 8a, 9, 10, 11

Digital Transformation

- Regions 1, 2, 3, 5a, 6, 7a, 8a, 9, 10, 11

Integration of migrants

- Regions 1, 2, 3, 5a, 9

Governance, peace, security and human development

- Regions 1, 2, 3, 5a, 9, 10, 11

Sustainable growth and jobs

- Regions 1, 2, 3, 5a, 6, 7a, 8a, 9, 10, 11

Global Gateway-related priorities (National/Regional)

- **Compulsory** for Strand 3 Regions 5a, 6, 7a, 8a, 9, 10, 11

* see further ahead...

For Erasmus+ Global Gateway-related priorities in specific

Regions:

[ERASMUS+ Global Gateway - CBHE priorities - European Commission](#)

NEW!

CBHE 2025

B. STRANDS



CBHE | Strands



Strand 1: Fostering access to cooperation in Higher Education

- Duration (months): 24 or 36
- Funding:
EUR 200.000 to
EUR 400.000



Strand 2: Partnerships for transformation in Higher Education

- Duration (months): 24 or 36
- Funding:
EUR 400.000 to
EUR 800.000



Strand 3: Structural reform projects

- Duration (months): 36 or 48
- Funding:
EUR 600.000 to
EUR 1.000.000
- Involvement of the Ministry

Strand 1 - Fostering access to cooperation in higher education

Target groups

- HEIs from least developed countries
- HEIs located in remote regions
- Newcomers or less experienced
- Individuals with fewer opportunities

Enhance management or administrative capacities

- Reforming and modernising university governance
- International Relation Offices
- Quality Assurance
- Capacity (mobility, evaluation, planning, etc.)

Ensure high quality and relevant education

- modules or **study programmes**, technical or professional orientations of programmes
- developing capacities **for postgraduate students and academic staff** as well as promoting postgraduate students and/or staff mobility
- implementing **training courses for HEI staff**
- Increasing the **accessibility** of individuals with fewer opportunities



Strand 2 - Partnerships for transformation in higher education

Target groups

- HEIs
- Local actors with a link to industry and business sectors
- Individuals: students, staff, learners in general
- Bodies responsible for HE at local and national level

Innovation in higher education

- Design of innovative curricula
- Innovative learning and teaching methods
- Active engagement with the business world and with research

Promoting reforms of HEIs

- Introduction of Bologna type reforms at institutional level
- Reform of governance and management systems and structures at institutional level



Strand 3 - Structural reform projects



Target groups

- HEIs
- National Ministry for higher education (HE)**
- Research institutions
- Other relevant authorities and stakeholders



Mutual learning between public authorities of the countries involved	Promote inclusive Higher Education systems	Increase capacities of bodies in charge of Higher Education	Identify synergies with ongoing EU initiatives
Foster national ownership	Efficient and effective policy making	Foster common regional strategies in Higher Education	Introduction of funding mechanisms

* Please consult the call conditions as defined in the Programme Guide

CBHE | STRAND 3 & Global Gateway



NATIONAL and MULTI-COUNTRY projects

The national competent HE authority - compulsory. But also national authorities that lead on the pre-identified priority value chain

Aligned to the given Erasmus+ Global Gateway-related investment priority – Regional LISTS*

https://international-partnerships.ec.europa.eu/policies/global-gateway/erasmus-global-gateway-priorities_en

Academic capacity building aligned with the COUNTRY and/or REGIONAL GG-related Erasmus+ priorities



***Attention! See specific national/regional priorities applying under each Region!**



CBHE 2025

C. TYPES OF PROJECT



Three types of CBHE projects

National projects	Multi-country regional projects	Multi-country cross-regional projects
HEIs from <u>one</u> third country not associated to the Erasmus+ Programme	HEIs from <u>several countries</u> not associated to the Erasmus+ Programme from <u>one Region</u>	HEIs from countries not associated to the Erasmus+ Programme belonging to <u>several Regions</u>

CBHE | Who can participate?



Who can participate?

- HEIs or organisations of HEIs
- Associations, public or private organisations active in the labour market or in the fields of education, training and youth

Who can coordinate?

- HEIs or organisations of HEIs
- Coordinator applies on behalf of all participating organisations involved in the proposal

What else?

Applicants must be established in:

- an EU Member State or third country associated to the Erasmus+ programme
- in an eligible third country not associated to Erasmus+ programme

Exceptions: Specific rules to be checked in the Programme Guide

Minimum partnership composition (1)

NATIONAL PROJECTS

Strand 1

Strand 2

Strand 3

Only for
Regions
2, 3,
5a, 6,
7a, 8a,
9

For all
eligible
Regions

- **at least 2** EU Member States or third countries associated to the programme
- each of these (minimum 2 participating) countries must involve **at least 1 HEI**

- **only 1 eligible third country** not associated to the programme

- with **at least 2 HEIs***

national
competent
authority
responsible for
HE

* see further ahead...

Minimum partnership composition (2)

MULTI - COUNTRY PROJECTS

Regional/
cross-
regional

Strand 1

Strand 2

For all
eligible
Regions

- **at least 2** EU Member States or third countries associated to the programme

- **at least 2** eligible third countries
- each of these (minimum 2 participating) countries must involve **at least 2 HEIs***

Strand 3

For all
eligible
Regions

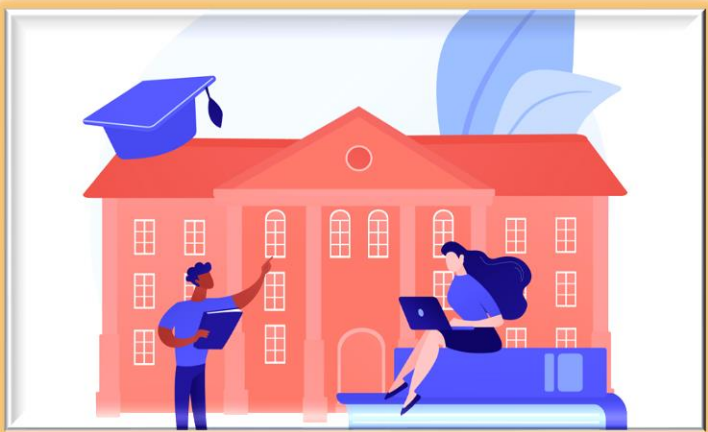
- each of these (minimum 2 participating) countries must involve **at least 1 HEI**

- **at least 1** eligible third country
- each participating country must involve **at least 2 HEIs***

national
competent
authority
responsible
for HE

* see further ahead...

For all Strands and projects



Application of Global Gateway
National/ Regional priorities

→ not mandatory for Strands
1 & 2

→ mandatory in Strand 3 for
Regions 5-11

→ check specific application
of National and/or Regional
priorities per Region!

EXCEPTION on Rule of 2 HEIs:

Not applicable where:

- the number of HEIs is **lower than 5** in the whole country
- or where one single institution represents **more than 50%** of the overall **student population** of the country



applications counting **only one HEI** from those countries will be accepted



Number of participating organisations from 3rd countries not associated to the programme **must be equal to or higher than** the number of participants from EU Member States and third countries associated to the programme

Global Gateway in a nutshell

Global Gateway as a CBHE policy objective

- Specific impact on Strand 3
- Impact on consortium composition
- Impact on award criterion 1

* This will be discussed further in the next session...

Applicability

- Projects under Strand 3 in the following regions **must be aligned** with the Erasmus+ Global Gateway-related priorities: Regions **5a, 6, 7a, 8a, 9, 10, 11**

Erasmus + Global Gateway – related Priorities

- Partners in national projects must align with the national **OR** Regional GG-related priority
- Partners in multi-country proposals must align with the existing, **shared** regional/sub-regional GG-related priority **WHERE APPLICABLE**

Global Gateway-related priorities: how to apply them

OPTIONAL alignment with Global Gateway strategy **BUT ENCOURAGED**. Proposal should continue to select and apply one of the **overarching** priorities to which their thematic best responds to

Strand 1 & 2
Strand 3 – Regions 1-3

COMPULSORY alignment with Global Gateway-related Erasmus+ **NATIONAL** priorities in the list. Proposal should continue to select and apply one of the **overarching** priorities to which their thematic best responds to

Strand 3 – Regions 5a-8a

COMPULSORY alignment with Global Gateway-related Erasmus+ **NATIONAL and/or SUB-REGIONAL / REGIONAL** priorities in the list. Proposal should continue to select and apply one of the **overarching** priorities to which their thematic best responds to

Strand 3 – Regions 9, 10, 11

NATIONAL proposals can align either with a **NATIONAL** Global Gateway-related Erasmus+ priority in the list **OR A REGIONAL (where applicable!)**. Proposal continue to select and apply one of the **overarching** priorities to which their thematic best responds to

Strand 3 – Regions 5-11

CBHE 2025

D. PROPOSAL BUDGET





Lump Sum Contract

Budget of the proposal

In the proposal, applicants provide a **detailed estimation of costs** and a **split of the lump sum per work package and per beneficiary**

Evaluators assess **cost details during evaluation** and make **recommendations, if needed**

Based on this, the **lump sum is fixed during grant preparation**

This will be discussed further in the second session...

CBHE 2025

OTHER NOVELTIES



What's new in the 2025 CBHE Call for Proposals

Length of application: max. 40 pages

Promotion of EU values

AI guidelines

✓ Strand 3: Global Gateway-related priorities

practicalities

NEW!

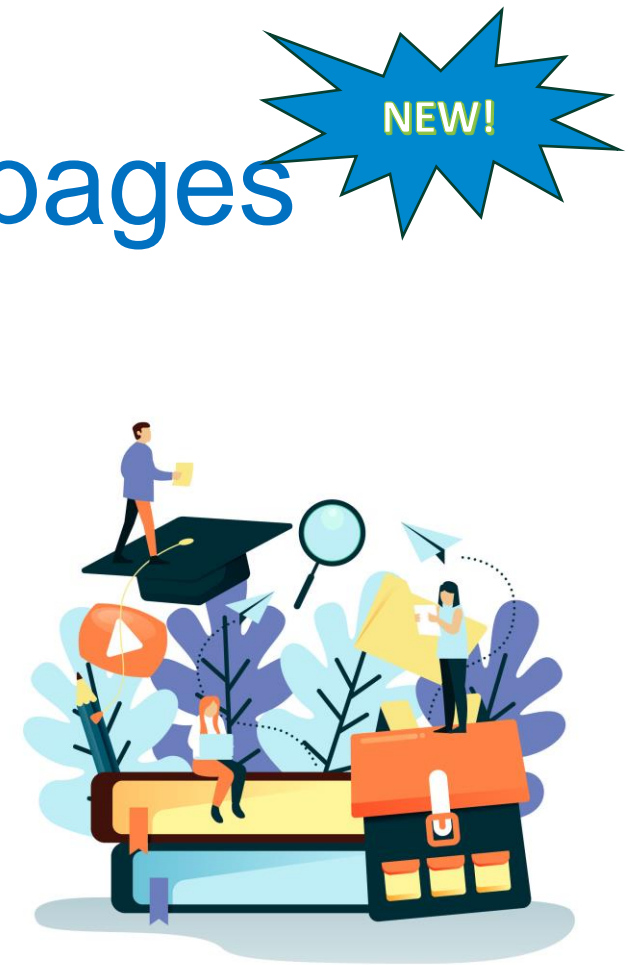
Your application: Part B max 40 pages

Focus on the needs of the third countries not associated to the Erasmus+ programme

Targeting the priorities that apply and matching them with the needs of these countries

Maximising benefit to third countries not associated to the programme

- The length of CBHE applications is now limited to **40 pages**
- Applications should cover all requirements of the Strands and Regions succinctly



designed by freepik

Attention! Evaluators will not consider any additional pages

Focus on EU values

Award Criterion 1 (Relevance):

ACTIVELY PROMOTE EU VALUES → practical application

*There can be no **discrimination** based on sex, race, colour, ethnic or social origin, genetic features, language, religion or belief, political or any other opinion, membership of a national minority, property, birth, disability, age or sexual orientation during the implementation of the activity*

Funding will be allocated to organisations in the countries within their territories as recognised by international law. Funding must respect any restrictions placed on EU external assistance imposed by the European Council. Applications have to be in line with the overall EU values of respect for human dignity, freedom, democracy, equality, the rule of law and respect for human rights, including the rights of persons belonging to minorities as foreseen in Article 2 of the Treaty of the European Union.

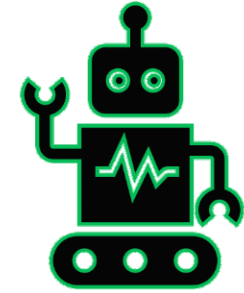
**Erasmus+
Programme Guide,
Part A: Respect of
EU Values**

**Strong
Focus!**

This will be discussed further in the next session...



Guidelines on Artificial Intelligence in Part C



Applying new guidelines on AI

Original content and authorship

All applications for projects and accreditations must contain original content authored by the applicant or other organisations jointly applying for a grant. If considering the use of generative artificial intelligence (AI) tools for the preparation of the application, applicants should be conscious of the potential of plagiarism and should exercise careful consideration to ensure the application's appropriateness and accuracy, its compliance with intellectual property regulations, as well as its original content.

**Strong
Focus!**

What's new in the 2025 CBHE Call for Proposals

Strand 3: Global Gateway

In Part A:

practicalities

- ✓ Click the 'Global Gateway' fixed keyword (Strand 3 proposals)
- ✓ Select most appropriate overarching priority from the 'descriptors' (also Strand 3 proposals)
- ✓ Don't forget to also choose the Region/Panel

Proposal ID SEP-211114905

Acronym test

1 - General information

?

Field(s) marked * are mandatory to fill.

Topic	ERASMUS-EDU-2025-CBHE-STRAND-1	Type of Action	ERASMUS-LS
Call	ERASMUS-EDU-2025-CBHE	Type of Model Grant Agreement	ERASMUS-AG-LS
Acronym *	test		
Proposal title *	Max 200 characters (with spaces). Must be understandable for non-specialists in your field. Note that for technical reasons, the following characters are not accepted in the Proposal Title and will be removed: < > " &		
Language	Please indicate the language of the proposal documents		
Duration in months	Estimated duration of the project in full months.		
Fixed keyword 1	Word or words that best describe(s) the subject of your project.		Add
Free keywords	Enter any words you think give extra detail of the scope of your proposal (max 200 characters with spaces).		

Abstract *

?

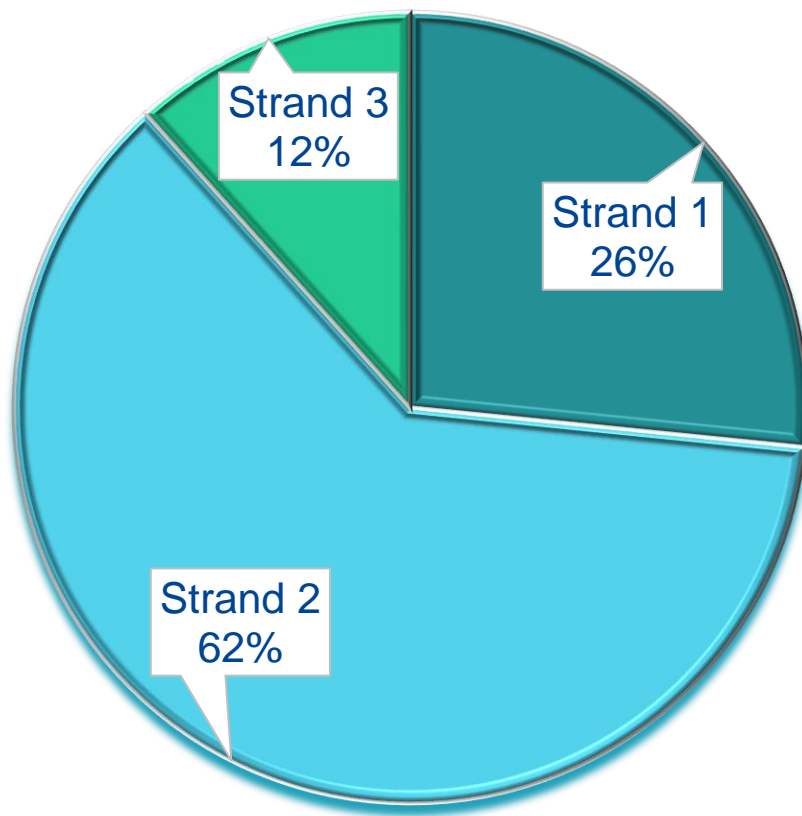
CBHE 2025

STATS



CBHE 2022-2023-2024

% of selected projects per Strand



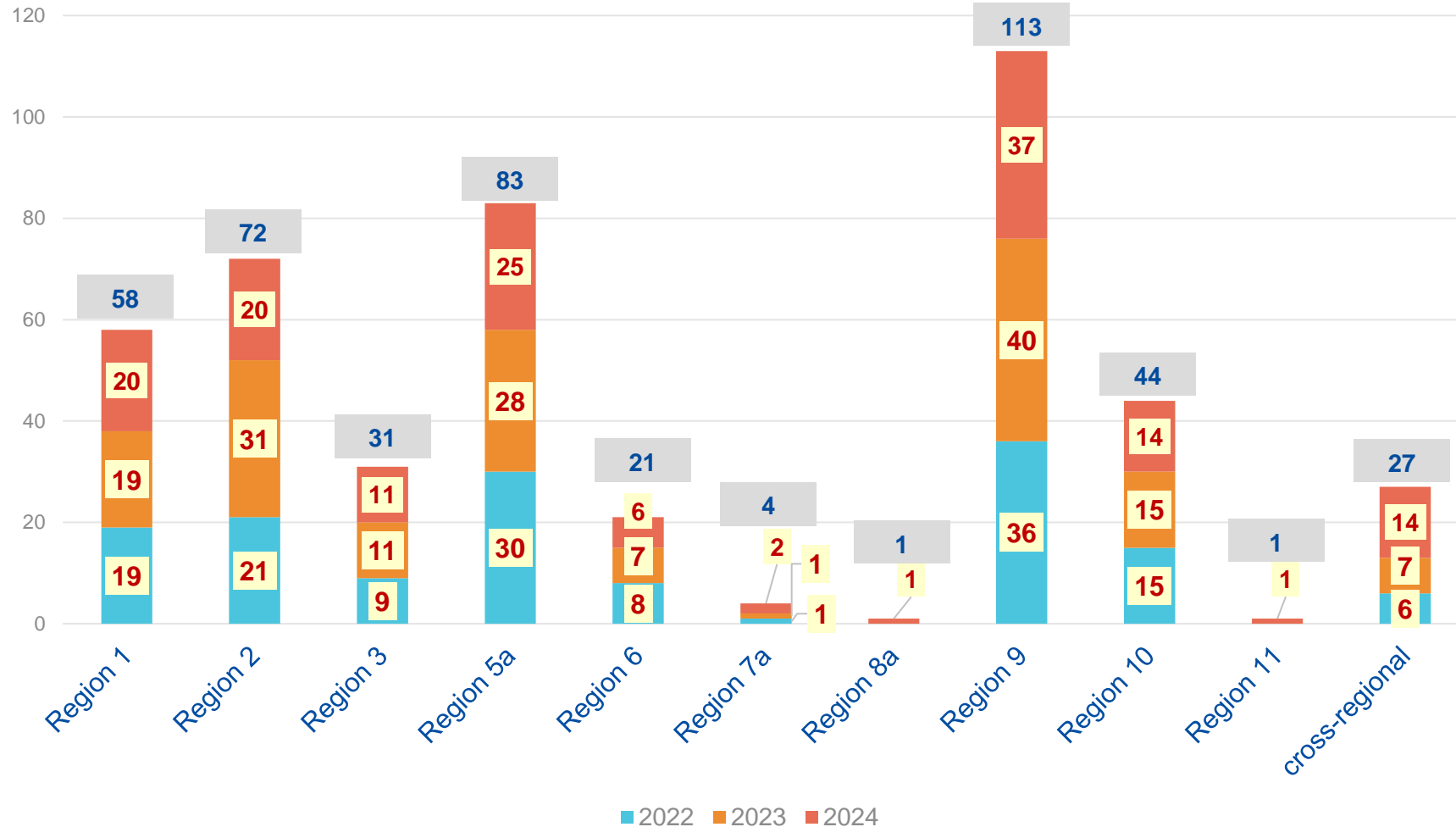
■ Strand 1 ■ Strand 2 ■ Strand 3

	2022	2023	2024
Applications received	620	790	972
Applications selected	145	159	151
Success rate	23%	20%	16%
Role in projects*			
Coordinator	145	159	151
Full partners & Affiliated entities	1.283	1.430	1.341
Total n° of beneficiaries	1.428	1.589	1.492
Average n° of beneficiaries / project	9,8	9,9	9,9

*instances of participation

CBHE 2022-2023-2024

Number of selected projects

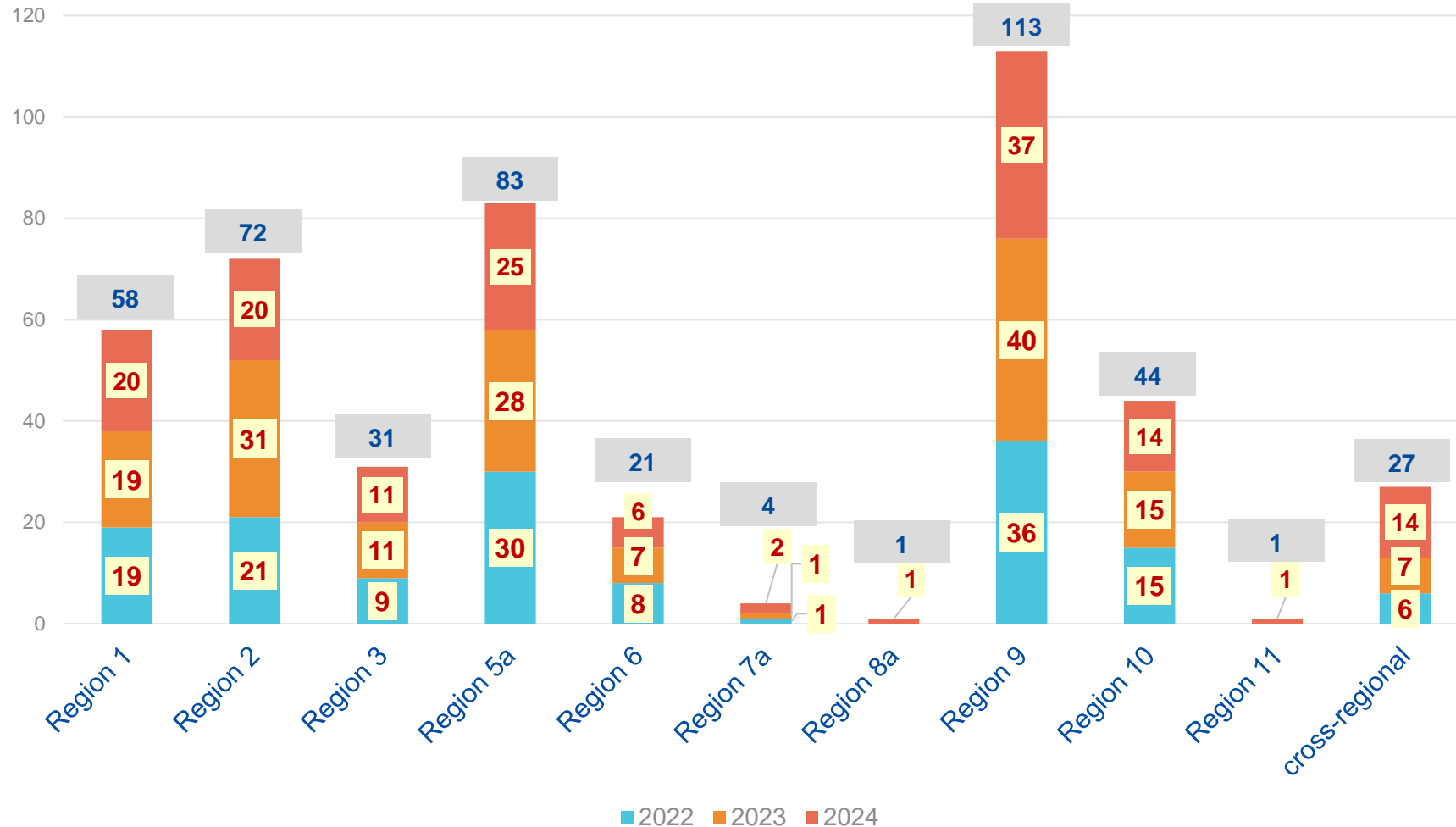


- Western Balkans (Region 1)
- Neighbourhood East (Region 2)
- South-Mediterranean countries (Region 3)
- Asia (Region 5a)
- Central Asia (Region 6)
- Middle East (Region 7a)
- Pacific (Region 8a)
- Sub-Saharan Africa (Region 9)
- Latin America (Region 10)
- Caribbean (Region 11)

Selected projects 2022: 145
 Selected projects 2023: 159
 Selected projects 2024: 151

CBHE 2022-2023-2024

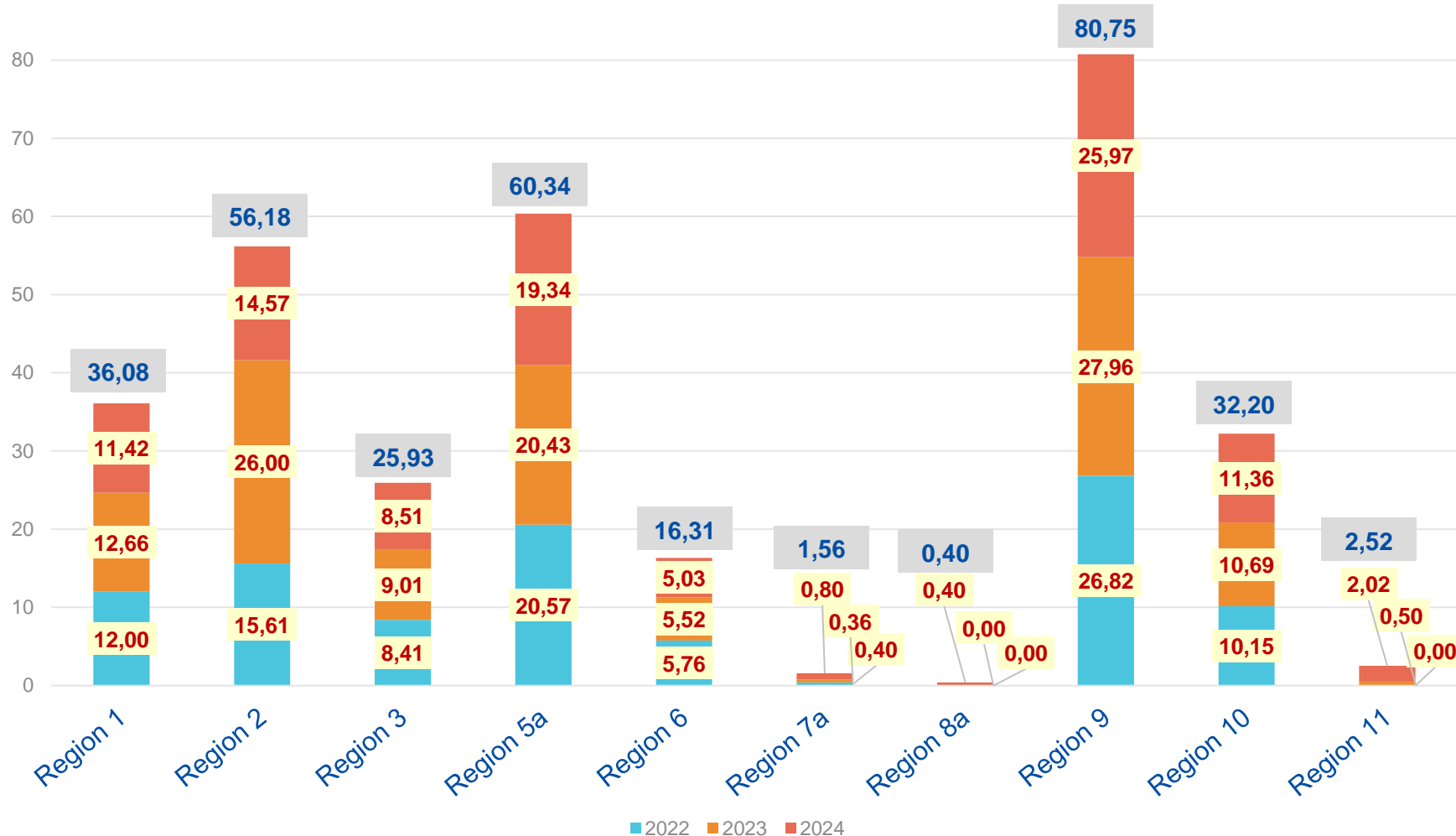
Number of selected projects



- Western Balkans (Region 1)
- Neighbourhood East (Region 2)
- South-Mediterranean countries (Region 3)
- Asia (Region 5a)
- Central Asia (Region 6)
- Middle East (Region 7a)
- Pacific (Region 8a)
- Sub-Saharan Africa (Region 9)
- Latin America (Region 10)
- Caribbean (Region 11)

Selected projects 2022: 145
 Selected projects 2023: 159
 Selected projects 2024: 151

CBHE 2022-2023-2024 EU grant awarded (M€)

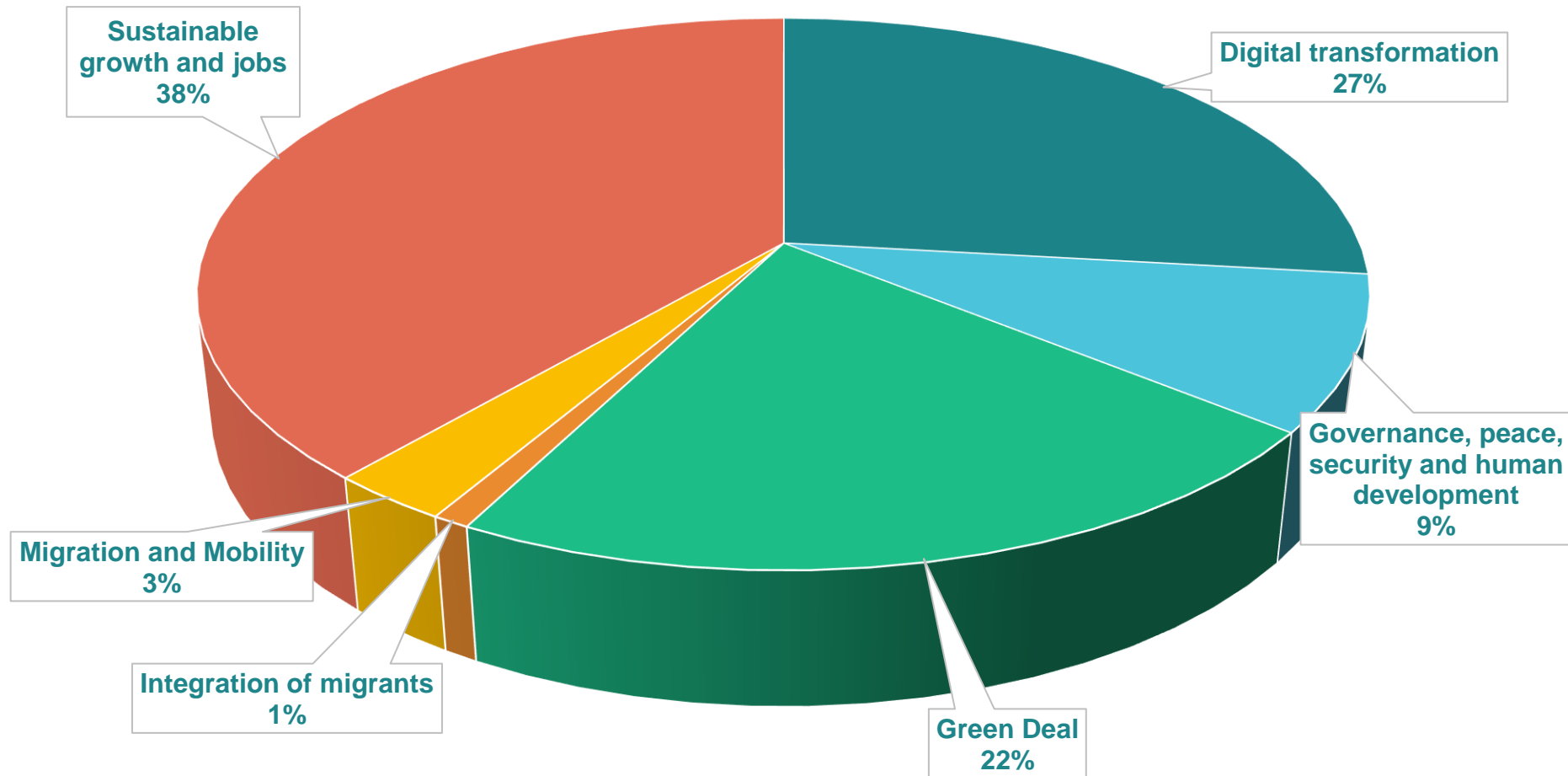


- Western Balkans (Region 1)
- Neighbourhood East (Region 2)
- South-Mediterranean countries (Region 3)
- Asia (Region 5a)
- Central Asia (Region 6)
- Middle East (Region 7a)
- Pacific (Region 8a)
- Sub-Saharan Africa (Region 9)
- Latin America (Region 10)
- Caribbean (Region 11)

EU grant awarded 2022: 99,72 M€
 EU grant awarded 2023: 113,13 M€
 EU grant awarded 2024: 99,42 M€

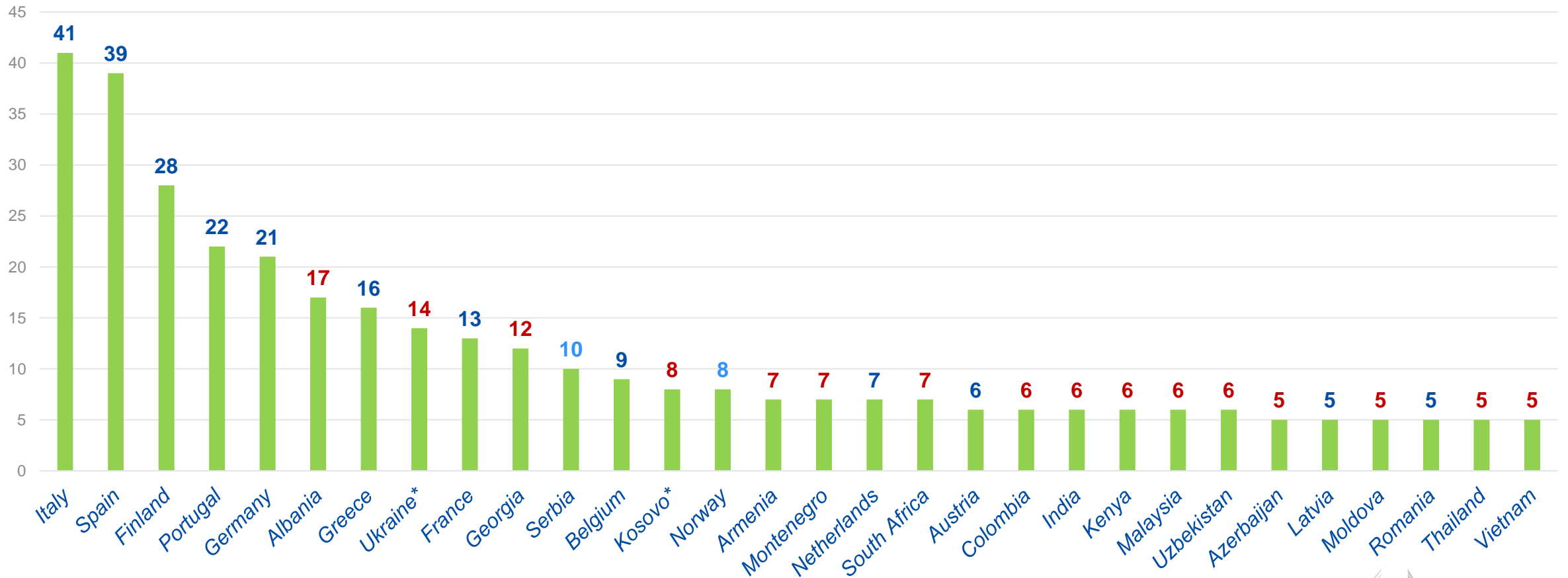
CBHE 2022-2023-2024

% of overarching priorities



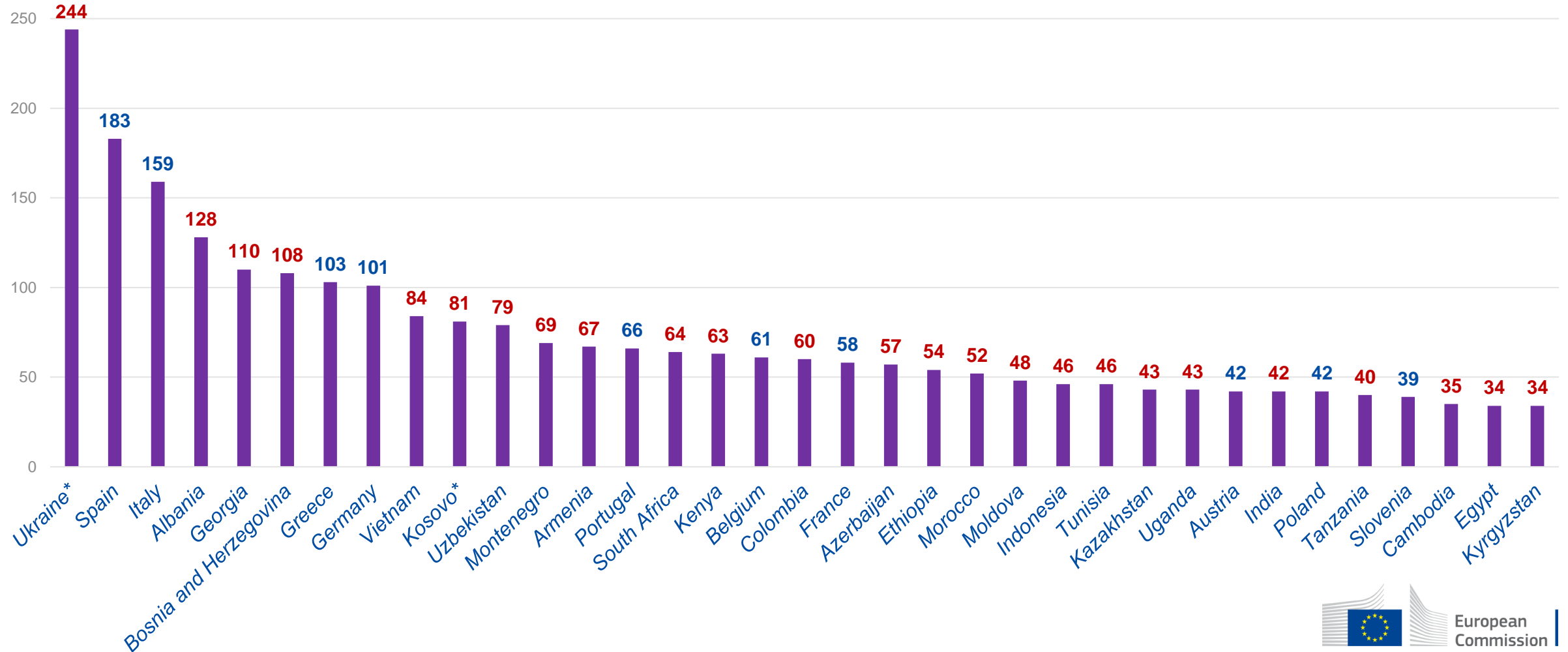
CBHE 2022-2023-2024

Top Coordinator countries



CBHE 2022-2023-2024

Top Partner countries



CBHE 2025

ADDITIONAL INFORMATION



Budget



Call Budget

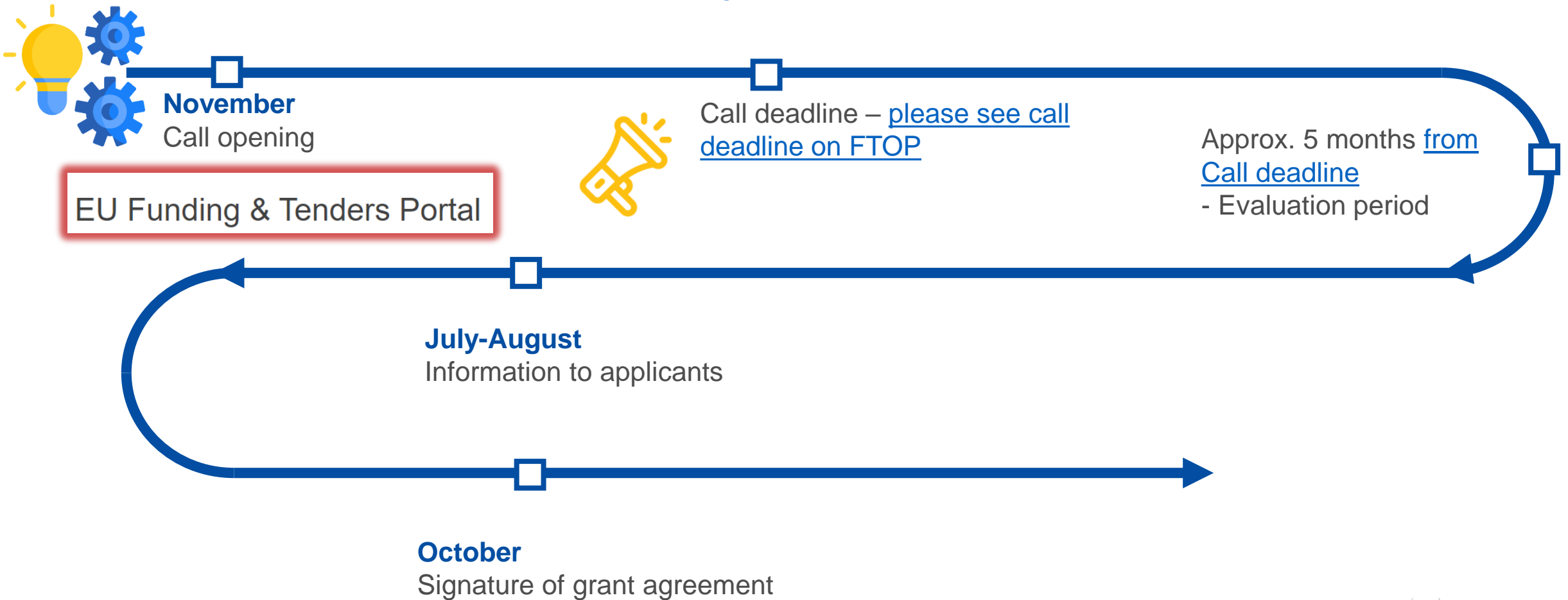
- approx. 107.000.000 €
- approx. 140 proposals to be funded
- Funding model: Lump sum type 2

EU co-financing

- 90 % of the total costs

Indicative Timeline

Capacity building in higher education (ERASMUS-EDU-2025-CBHE)
<https://ec.europa.eu/info/funding-tenders/opportunities/portal>



* Please consult the final call conditions defined in the Programme Guide

How to submit a proposal?

- **Where?**

Applications must be submitted through the **European Commission's Funding & Tender Opportunities Portal** (F&TP) using the Portal Submission System:

<https://ec.europa.eu/info/funding-tenders/opportunities/portal/screen/home>

- **Who?**

Proposals must be created and submitted by a contact person of the coordinating organisation

- **When?**

Publication: 19 November 2024

Proposal submission opening: 03 December 2024

Deadline: – please see call deadline on FTOP

Applicants are highly recommended to submit proposals as early as possible and at least 48 hours prior to the call deadline.

Erasmus+ CBHE 2025 promotion activities

General CBHE Infoday (online) organised by EACEA (05.12.2024)

- [Events \(europa.eu\)](#)

Participation to National Erasmus+ Info-days organised by NAs, NEOs and ENFPs

- <https://erasmus-plus.ec.europa.eu/contacts/national-agencies>
- [Erasmus+ National Focal Points | Erasmus+ \(europa.eu\)](#)
- [National Erasmus+ Offices | Erasmus+ \(europa.eu\)](#)

CBH2025 Info session | Questions?

Join at
slido.com
#CBHE2025





European Commission

Keep in touch

<http://eacea.ec.europa.eu>
EACEA-EPLUS-CBHE@ec.europa.eu

